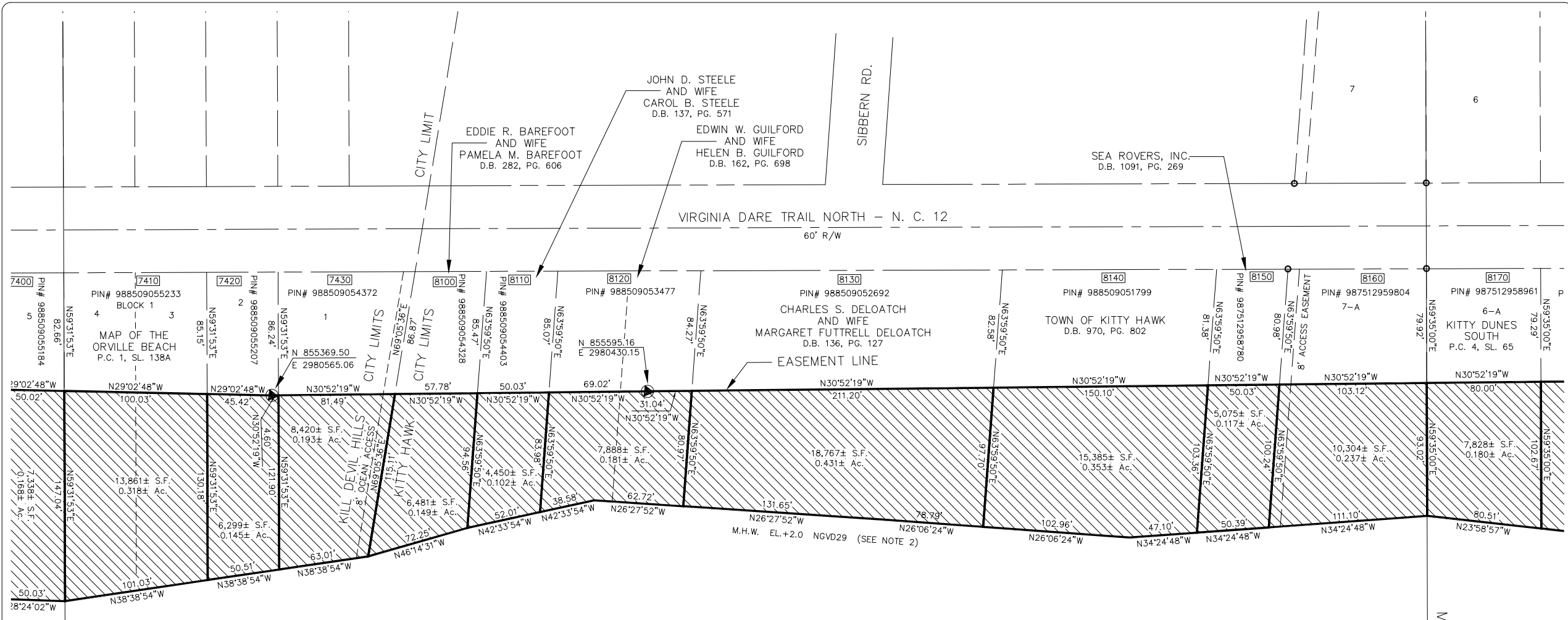
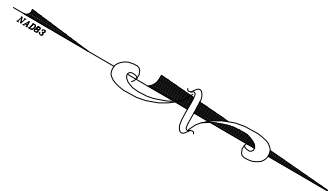


COPYRIGHT © W.K. DICKSON & CO., INC. ALL RIGHTS RESERVED. REPRODUCTION OR USE OF THE CONTENTS OF THIS DOCUMENT, IN WHOLE OR IN PART, WITHOUT WRITTEN CONSENT OF W.K. DICKSON & CO., INC. IS PROHIBITED. ONLY COPIES FROM THE ORIGINAL OF THIS DOCUMENT, MARKED WITH AN ORIGINAL SIGNATURE AND SEAL, SHALL BE CONSIDERED TO BE VALID, TRUE COPIES.



ATLANTIC OCEAN



MATCH LINE SEE SHEET 20

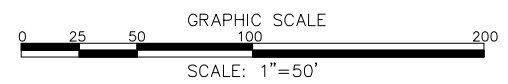
MATCH LINE SEE SHEET 22

- LEGEND**
- ▲ NAIL FOUND
 - IRON PIN FOUND
 - MONUMENT FOUND
 - DRILL HOLE FOUND
 - IRON ROD SET
 - ▲ MAG NAIL SET
 - ◌ EASEMENT LINE BEND



This document originally issued and sealed by DAVID M. EDWARDS, PLS
 NC Registration No. L-3901
 04/02/04
 This media should not be considered a certified document.

The original documents are recorded at the Dare County Registry in Plat Cabinet F1 Slides 200 through 228.



REV. NO.	DESCRIPTION	DATE

PROJECT MANAGER
 DME
 DRAWN BY
 JRM
 APPROVED BY
 DME
 FILE NAME
 N-DARE-FINAL-N

DRAWING SCALE
 1"=50'
 PROJECT DATE
 AUG 2003
 PROJECT NUMBER
 30333.02.WL
 PLOT DATE
 04/01/04



909 MARKET STREET
 WILMINGTON, NC 28401
 (910) 762-4200

Office Locations:
 North Carolina
 South Carolina
 Georgia
 Florida

RELEASED FOR	
APPROVALS	
BIDDING	
CONSTRUCTION	
RECORD DWG.	

NORTHERN DARE BEACHES
 SHORELINE PROTECTION
 AND
 EROSION ABATEMENT PROJECT
 NORTHERN PORTION REACH 1
 KILL DEVIL HILLS AND KITTY HAWK
 ATLANTIC TOWNSHIP, DARE COUNTY, NORTH CAROLINA

COUNTY OF DARE
 EASEMENT LINE SURVEY

21 / 29