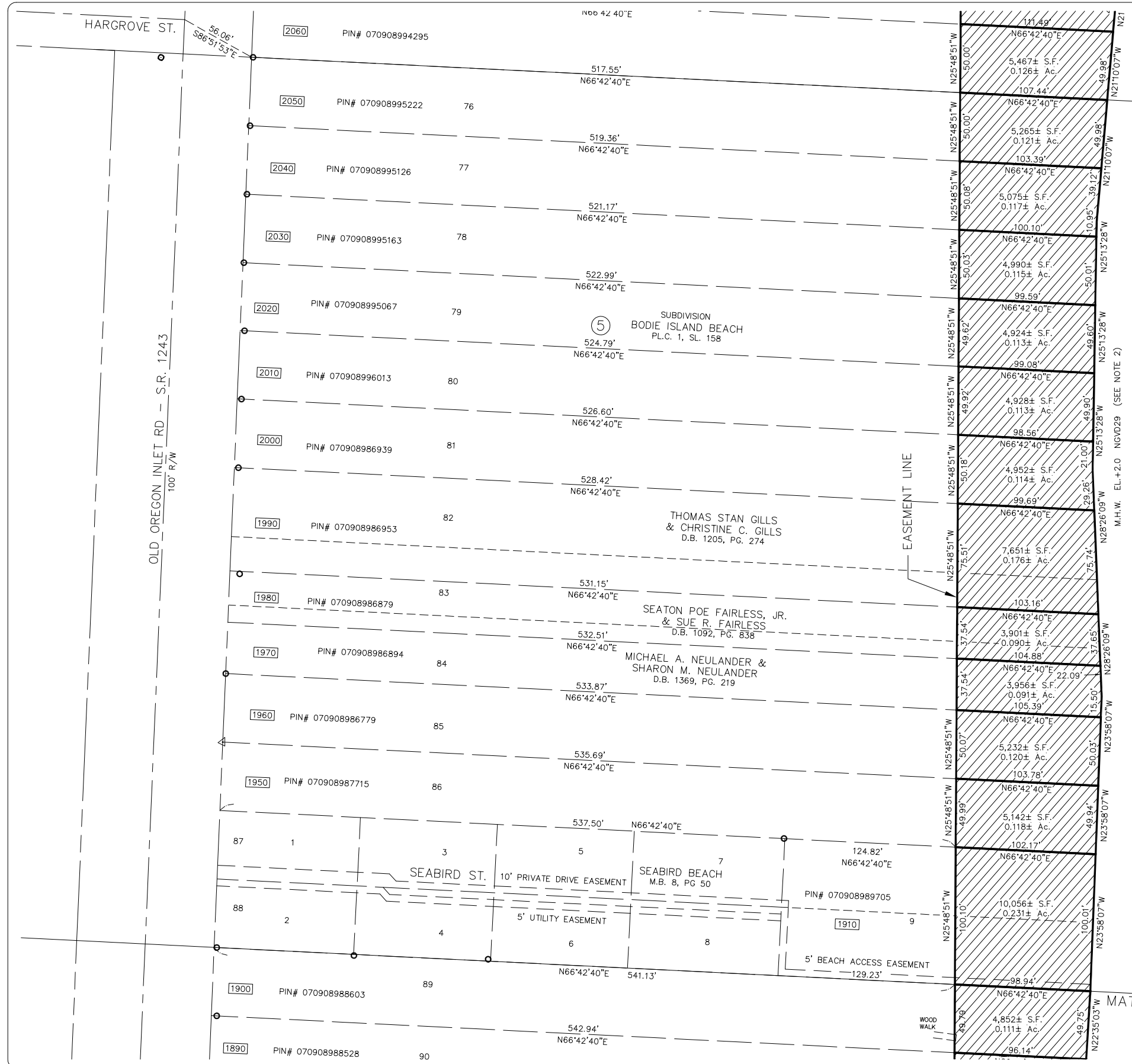


COPYRIGHT © W.K. DICKSON & CO., INC. ALL RIGHTS RESERVED. REPRODUCTION OR USE OF THE CONTENTS OF THIS DOCUMENT, ADDITIONS OR DELETIONS TO THIS DOCUMENT, IN WHOLE OR IN PART, WITHOUT WRITTEN CONSENT OF W.K. DICKSON & CO., INC. IS PROHIBITED. ONLY COPIES FROM THE ORIGINAL OF THIS DOCUMENT, MARKED WITH AN ORIGINAL SIGNATURE AND SEAL, SHALL BE CONSIDERED TO BE VALID, TRUE COPIES.

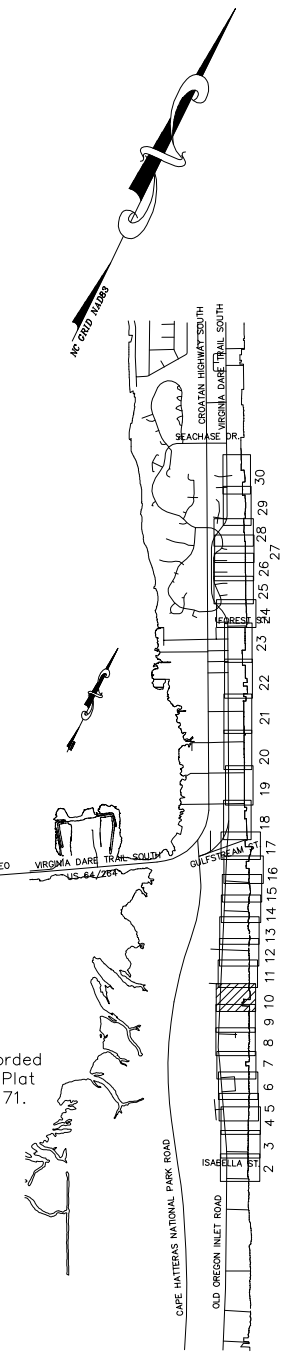
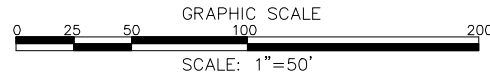


MATCH LINE SEE SHEET 11

ATLANTIC OCEAN

This document originally issued and sealed by DAVID M. EDWARDS, PLS NC Registration No. L-3901 02/04/04  
 This media should not be considered a certified document.  
 The original documents are recorded at the Dare County Registry in Plat Cabinet F1 Slides 142 through 171.

- LEGEND
- ▲ NAIL FOUND
  - IRON PIN FOUND
  - MONUMENT FOUND
  - DRILL HOLE FOUND
  - IRON ROD SET
  - ▲ MAG NAIL SET
  - ⊕ EASEMENT LINE BEND



REV. NO.	DESCRIPTION	DATE

PROJECT MANAGER DME	DRAWING SCALE 1"=50'
DRAWN BY JRM	PROJECT DATE AUG 2003
APPROVED BY DME	PROJECT NUMBER 30333.02.WL
FILE NAME N-DARE-FINAL-S	PLOT DATE 01-27-04



909 MARKET STREET  
WILMINGTON, NC 28403  
(910) 762-4200

Atlanta, GA    Hickory, NC  
Charlotte, NC    Raleigh, NC  
Columbia, SC    Wilmington, NC

RELEASED FOR	
APPROVALS	
BIDDING	
CONSTRUCTION	
RECORD DWG.	

NORTHERN DARE BEACHES  
SHORELINE PROTECTION  
AND  
EROSION ABATEMENT PROJECT  
DARE COUNTY, NORTH CAROLINA

COUNTY OF DARE  
EASEMENT LINE SURVEY

10 / 30